

Severe Allergy To: _____

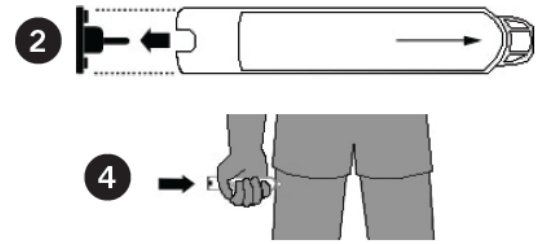
TREAT STUDENT BEFORE CALLING EMERGENCY CONTACTS

The first signs of a reaction can be mild, but symptoms can get worse quickly

THIS SIDE OF FORM TO BE COMPLETED BY SCHOOL NURSE	
WHEN THIS HAPPENS	DO THIS

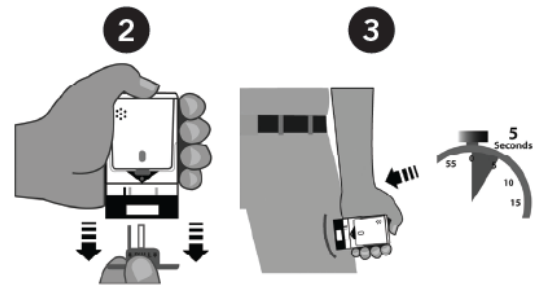
EPIPEN® (EPINEPHRINE) AUTO-INJECTOR DIRECTIONS

1. Remove the EpiPen Auto-Injector from the plastic carrying case.
2. Pull off the blue safety release cap.
3. Swing and firmly push orange tip against mid-outer thigh.
4. Hold for approximately 10 seconds.
5. Remove and massage the area for 10 seconds.



AUVI-Q™ (EPINEPHRINE INJECTION, USP) DIRECTIONS

1. Remove the outer case of Auvi-Q. This will automatically activate the voice instructions.
2. Pull off red safety guard.
3. Place black end against mid-outer thigh.
4. Press firmly and hold for 5 seconds.
5. Remove from thigh.



Emergency Contacts – CALL 911 FIRST

Rescue Squad: 911

Parent/Guardian: _____

Phone: _____

Other Emergency Contact: _____

Phone: _____

Doctor: _____

Phone: _____

**Staff Trained on Student's Allergy Action Plan
Name & Date**

1. _____
2. _____
3. _____
4. _____
5. _____
6. _____
7. _____
8. _____

Campus Nurse Signature

Date